

Proposal to replace Ash tree in St Stephens-by-Saltash cemetery 2023/24 planting season 'Tree Saltash'



Fig 1 View looking North along Farm Lane, before ash-tree was felled

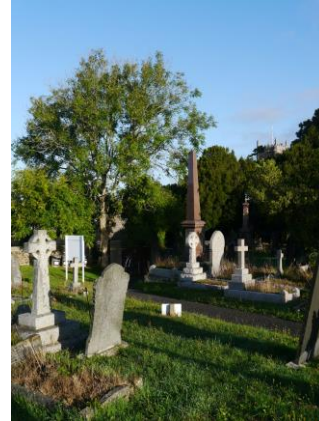


Fig 2 View towards the felled ash-tree, looking from the cemetery

The mature ash tree beside the Farm Lane gate to the cemetery, shown in Figs 1 and 2, needed to be felled because of ash die-back, and because the roots were damaging the pathway

It was of considerable amenity value, defining the boundary of the cemetery, and of considerable value to wildlife, as a component of a 'green corridor' from Churchtown Nature Reserve along Farm Lane, to the ancient habitats of the churchyard yews, sycamores, beech and ash-trees, including 12 trees with Tree Preservation Orders (Fig 3). Additionally, note that Saltash Environmental Action are currently working with Saltash Town Council to maintain the periphery of the cemetery for wildflowers, for benefit of wildlife.

The county map (Fig3) and Google map (Fig 4) show the location concerned, with the proposed sites for planting marked with X X.

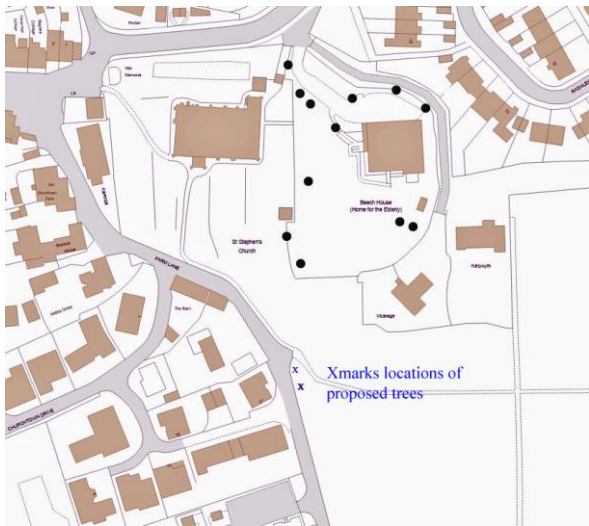


Fig 3

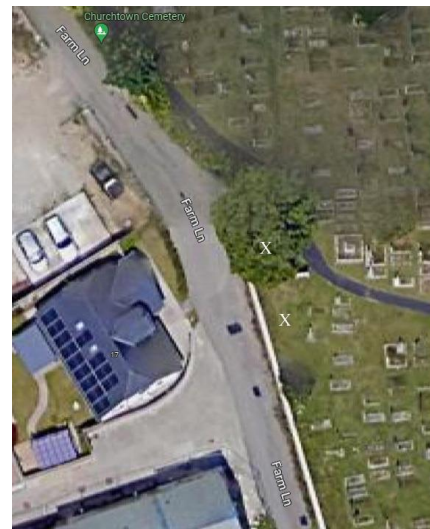


Fig 4

Maps showing (Fig 3) general location and (Fig 4) proposed planting locations in relation to historic ash tree.

People using the main path of the cemetery are now faced with the rather bleak views shown in Figs 5 and 6. The dustbins are in full view, and the noticeboard stands out, rather uncomfortably.



Fig 5 Current view looking East at cemetery boundary wall

An important principle of tree preservation that each tree felled should be replaced by between one and three new trees appropriate for the location. We therefore would like to apply formally to the authorities for permission to plant trees in this location.

In proposing exact sites and species for planting, we take account of graves, wall and pathway. The locations are shown in Figures 5 and 6 and the sketch in Fig 7.



Fig 6 Current view from just within the cemetery entrance gates

Instead of planting another large tree, we propose planting two medium-sized trees about 8 metres apart. These would ideally be hawthorn. These are reliable native trees that form a good head (leaving space beneath for a bench, if required in future), with attractive flowers and fruit, and relatively small leaves that do not cause a nuisance after leaf-fall.

We will support them with a 45° stake for the first 3 years.

I have discussed the proposal with the residents in the house opposite, who are totally in favour.

Fig 7 Sketch showing two hawthorns in proposed locations after about 10 years' growth



Tree Saltash is applying for permission from the Joint Burial Board to proceed with this planting. At the current time we are not asking for funding as we are also supported by Forest for Cornwall.

Adrian White
on behalf of Tree Wardens